

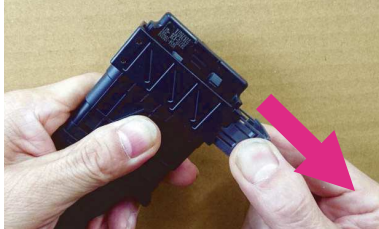
# Please be sure to read these.



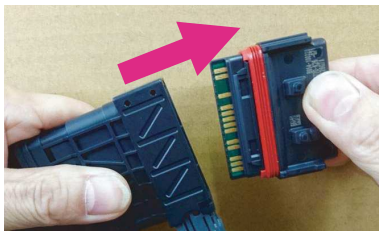
## Slot type coupler RTF Handling Precautions

Improper handling may result in serious malfunction and cannot be easily repaired. Please be careful.

### How to remove the stock ECU



① To remove the stock ECU, pull the gray lever as far as it will go.

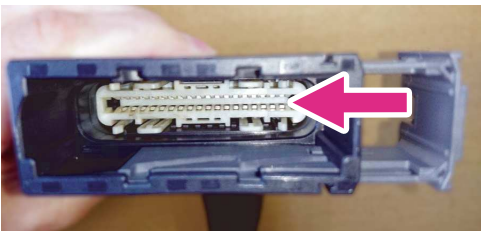


② When you pull the lever all the way, the ECU will become free. Grasp the coupler body firmly, pull the ECU straight out. Do not touch the terminals of the ECU with your hands.

### What to check before installing the stock ECU in ENIGMA



① Check that there is no dust or debris in the coupler slot of the product. Next, make sure that the gray lever is pulled all the way out.



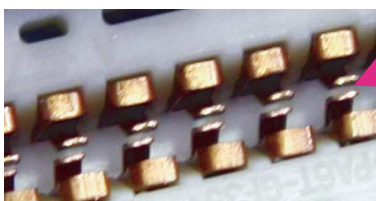
② **Every time** make sure that the metal terminal inside the coupler slot (see photo) is open. Make sure that the metal terminals on the arrow part open evenly and that there is a gap for the "plug-in part" of the ECU to enter. Do the same for the body side coupler.

#### important

The metal terminal inside the coupler to be checked has a structure that grips the board tightly from above and below when the ECU is inserted. If you insert the ECU when it is not properly opened, you will break the terminals. Look at the picture and check it carefully.

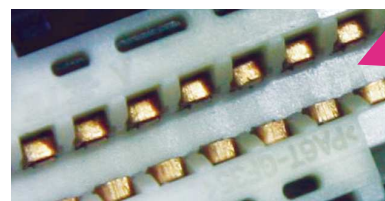
### Check inside the coupler slot

#### Incorrect



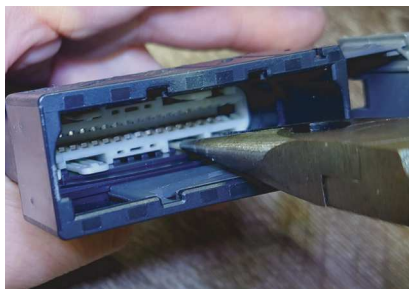
The metal terminal to grip the terminals of the ECU is popping out.(see photo)  
If you insert In this state, you will break the terminals.

#### Correct



The metal terminal to grip the terminals of the ECU is properly opening.(see photo)  
The thickness of the board terminal protruding from the ECU is secured.

## If the terminal inside the coupler slot is not in the correct position



Using radio pliers or similar tools, pull horizontally and gradually so as not to damage the wide claws that protrude from four locations on the top, bottom, left, and right sides of the white part at the back inside the coupler slot. Once the terminal looks like the "correct example", do not pull it any further.

Do not touch the metal terminal parts inside the coupler.  
Do not grip radio pliers or similar tools too tightly.  
Also, do not pull too hard at once.

## How to install the stock ECU in ENIGMA



① Check the orientation of the ECU, insert it slowly. If you mistake on the front and back, can not insert the coupler slot. Push the ECU body straight into the coupler.

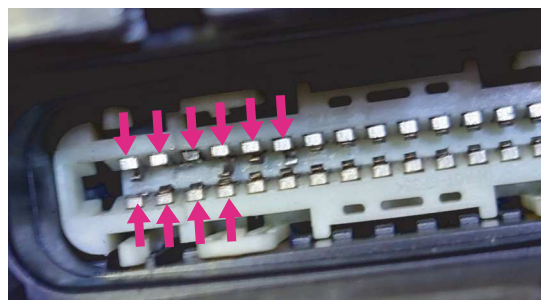


② While pushing the ECU, push the gray lever back to its original position. At this time, the ECU is linked to the movement of the gray lever. The system goes deeper and is set in the correct position.

This type of ECU has the board terminal section exposed from the main body, so if dirt, dust, grime, oil, or fingerprints get on it, it can cause serious trouble. Handle the ECU with care after removing it. Please also be careful of static electricity.

## ! TROUBLE CASE

This is an example where the terminal parts is broken without checking inside the coupler slot. The terminal parts pointed to by the arrow is broken. Since it cannot be repaired, it will be completely replaced in this case.



There are important precautions for ECU removal and installation as explained above. Those who are uneasy about the above work and who do not understand please be sure to install in a specialty shop.

***This company will not bear any responsibility whatsoever for any trouble.  
Please understand the contents and work correctly.***

The apps download & Operation manual



## Connecting the HUNTER CUB CT125 (2BJ-JA55) ECU to the ENIGMA type-V Bluetooth version

Supported models of this manual

**ENIGMA type** ENIGMA type-V (EVD379 / EVD379RTF)

**Vehicle type** HONDA HUNTERCUB CT125(2BJ-JA55)

**If you use the RTF type, remove the coupler which is connected to the ECU, please connect the coupler that has come out from ENIGMA type-V RTF to the ECU and the vehicle body side. Please make sure that the lock sound is a "click".**

Installation should be done in a safe place.

A basic knowledge of the HUNTERCUB CT125 (JA55) maintenance is necessary.

There is an ECU under the seat and can be removed by pulling the lever of the coupler.

After removing the ECU, Make an **interrupt connection** from the ENIGMA type-V wiring to the wiring on the coupler side.

**(An interrupt connection can made without cutting but by making a branch in the normal connection)**

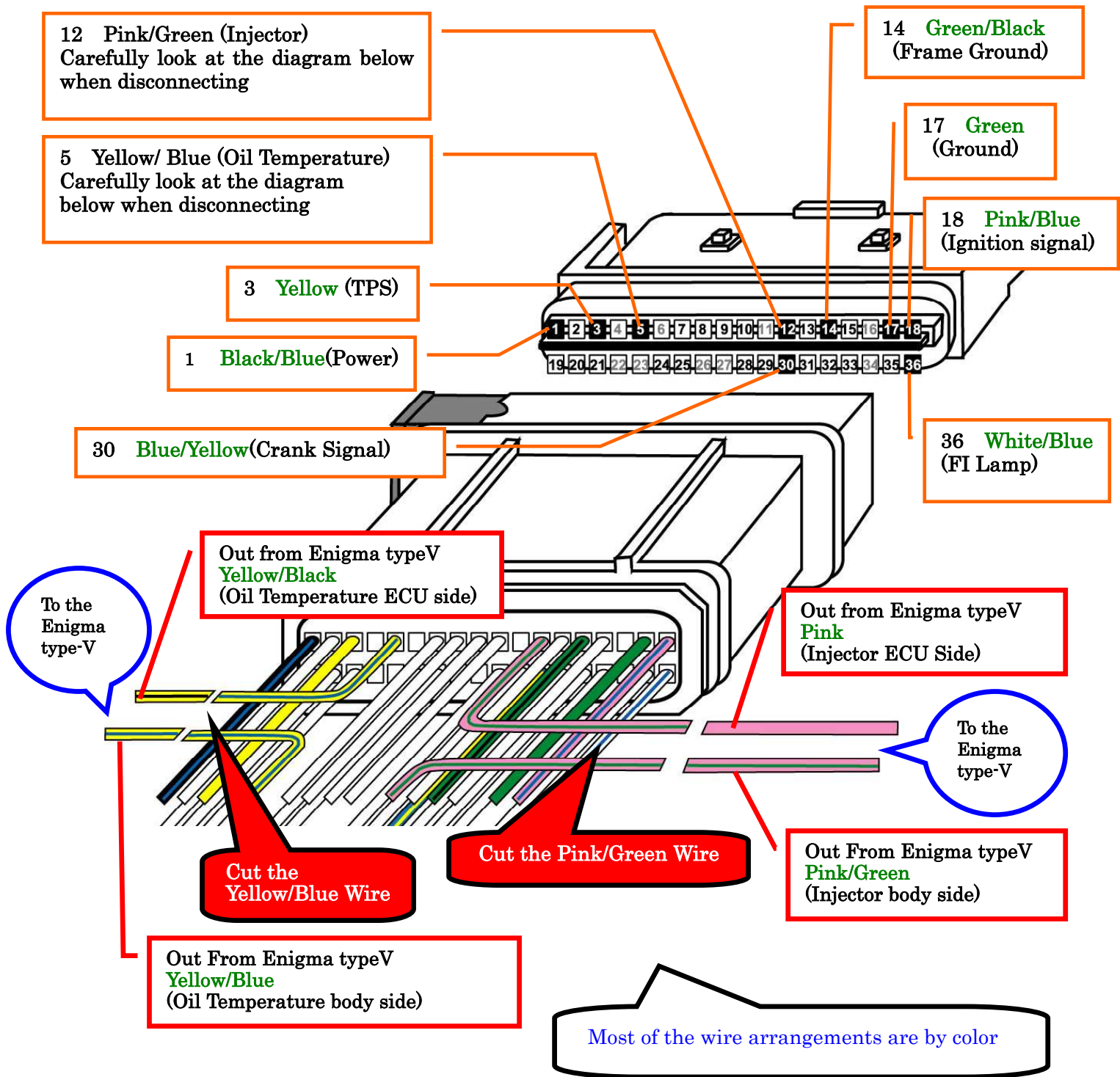
**Do not use an electro tap on the interrupt wiring connection. It causes many connection issues that are problematic to the operation of the ENIGMA type-V. (Use solder or the like for improved reliability.)**

After completing the wiring, attach the ECU to the coupler. Insert the ECU into the coupler a little and push the lever to pull in the ECU.

**The wires from the Enigma type-V will be the fundamentally the same, or similar to that of the wires it will connect to from the bike. Please carefully follow the diagram below when making the connection. There are a total of 11 wires.**

- **The purple cable is a service cable and is not to be connected to the ECU.**
- By cutting the No.5 Pin (Yellow/ Blue) wire of ECU (Oil Temperature), the bike vehicle body side wiring from the ENIGMA type-V connect the Yellow/ Blue wire. Connect the Yellow/Black wire the ECU side.
- By cutting the No.12 Pin (Pink / Green) wire of ECU (Injecttor), the bike vehicle body side wiring from the ENIGMA type-V connect the Pink / Green wire. Connect the Pink wire the ECU side.
- Both the No.7 Pin and the No.18 Pin are Pink/Blue wire.
- Both the No.17 Pin and the No.35 Pin are Green wire.
- **In order to prevent the reporting water from entering into the ENIGMA inside from the base of the wiring from the ENIGMA type-V , it is recommended that you install in the lower wiring side in the vertical the ENIGMA type-V.**

We assume that it will be installed under the rear carrier, and the wiring from the ENIGMA type-V is a little longer.



ECU terminal connected 9wires 1, 3, 5, 12, 14, 17, 18, 30, 36. Please confirm the picture.

The purple line is the service output line. The ENIGMA type-V will output 5V each crank rotation. Most commercially available digital tachometers are supported. Exact values will be displayed if these cables are connected. They are useful to various applications. Do not short-circuit by taping when there is no need.

The limiter has not been canceled after the wiring connection is complete. It can be easily canceled by communicating with the Enigma operating software on a smartphone or PC.

Please use the ENIGMA type-V dedicated app for the iOS/Android version of the app.  
Download the **HUNTERCUB CT125 (JA55)** dedicated ENIGMA type-V app from the model selection screen in the app. Other Vehicle dedicated apps cannot be used.

Please use the **HUNTERCUB CT125 (JA55)** dedicated ENIGMA type-V PCsoftware.  
Other Vehicle, Other ENIGMA dedicated PCsoftwares, cannot be used.

The Enigma type-V operating software can be downloaded free from our website.

<http://www.dilts-japan.com>