

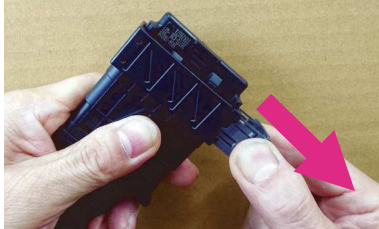
Please be sure to read these.



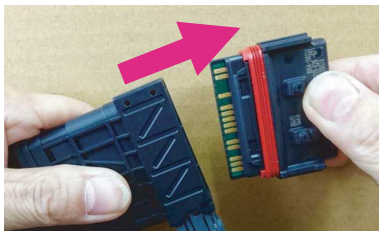
Slot type coupler RTF Handling Precautions

Improper handling may result in serious malfunction and cannot be easily repaired. Please be careful.

How to remove the stock ECU



① To remove the stock ECU, pull the gray lever as far as it will go.

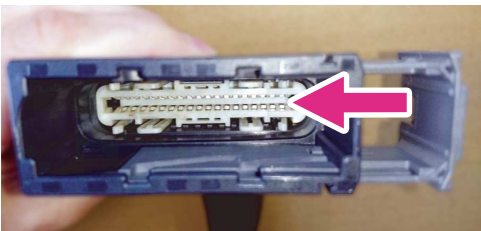


② When you pull the lever all the way, the ECU will become free. Grasp the coupler body firmly, pull the ECU straight out. Do not touch the terminals of the ECU with your hands.

What to check before installing the stock ECU in ENIGMA



① Check that there is no dust or debris in the coupler slot of the product. Next, make sure that the gray lever is pulled all the way out.



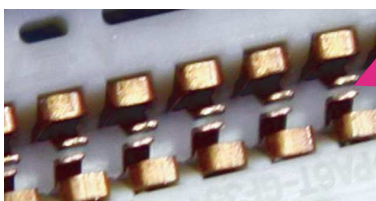
② **Every time** make sure that the metal terminal inside the coupler slot (see photo) is open. Make sure that the metal terminals on the arrow part open evenly and that there is a gap for the "plug-in part" of the ECU to enter. Do the same for the body side coupler.

important

The metal terminal inside the coupler to be checked has a structure that grips the board tightly from above and below when the ECU is inserted. If you insert the ECU when it is not properly opened, you will break the terminals. Look at the picture and check it carefully.

Check inside the coupler slot

Incorrect



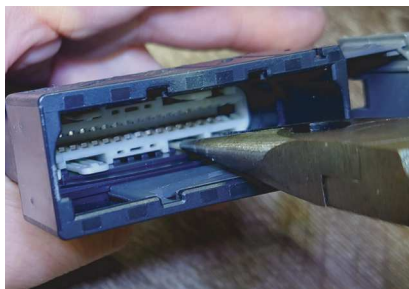
The metal terminal to grip the terminals of the ECU is popping out.(see photo)
If you insert in this state, you will break the terminals.

Correct



The metal terminal to grip the terminals of the ECU is properly opening.(see photo)
The thickness of the board terminal protruding from the ECU is secured.

If the terminal inside the coupler slot is not in the correct position



Using radio pliers or similar tools, pull horizontally and gradually so as not to damage the wide claws that protrude from four locations on the top, bottom, left, and right sides of the white part at the back inside the coupler slot. Once the terminal looks like the "correct example", do not pull it any further.

Do not touch the metal terminal parts inside the coupler.
Do not grip radio pliers or similar tools too tightly.
Also, do not pull too hard at once.

How to install the stock ECU in ENIGMA



① Check the orientation of the ECU, insert it slowly. If you mistake on the front and back, can not insert the coupler slot. Push the ECU body straight into the coupler.

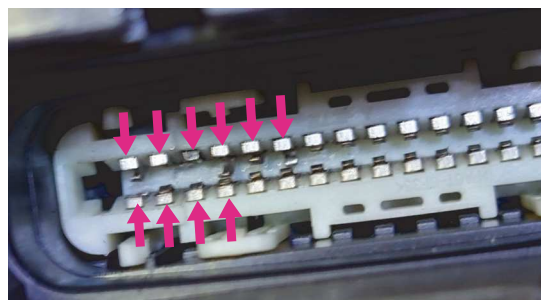


② While pushing the ECU, push the gray lever back to its original position. At this time, the ECU is linked to the movement of the gray lever. The system goes deeper and is set in the correct position.

This type of ECU has the board terminal section exposed from the main body, so if dirt, dust, grime, oil, or fingerprints get on it, it can cause serious trouble. Handle the ECU with care after removing it. Please also be careful of static electricity.

! TROUBLE CASE

This is an example where the terminal parts is broken without checking inside the coupler slot. The terminal parts pointed to by the arrow is broken. Since it cannot be repaired, it will be completely replaced in this case.



There are important precautions for ECU removal and installation as explained above. Those who are uneasy about the above work and who do not understand please be sure to install in a specialty shop.

***This company will not bear any responsibility whatsoever for any trouble.
Please understand the contents and work correctly.***

The apps download & Operation manual



Connecting the GROM(2BJ-JC92) ECU to the ENIGMA SemiFull Bluetooth version

Supported models of this manual

ENIGMA type ENIGMA SemiFull (SF2337RTF)

Vehicle type HONDA GROM (2BJ-JC92 1000001-1099999)

This ENIGMA SemiFull can not connect the GROM(8BJ-JC92) .

If you use the RTF type, remove the coupler which is connected to the ECU, please connect the coupler that has come out from ENIGMA SemiFull RTF to the ECU and the vehicle body side. Please make sure that the lock sound is a "click".

Installation should be done in a safe place. A basic knowledge of GROM(2BJ-JC92) maintenance is necessary.

The ECU is located in the cowl on the lower left side of the seat and is rubber mounted when you remove the exterior under the seat on the left side. It can be removed by pulling the lever on the coupler.

After removing the ECU, modify the wiring to interrupt the ENIGMA SemiFull, and install the ECU into the coupler. Make sure the notches on the ECU and coupler are aligned and Insert the ECU slightly into the coupler and push the lever to retract the ECU.

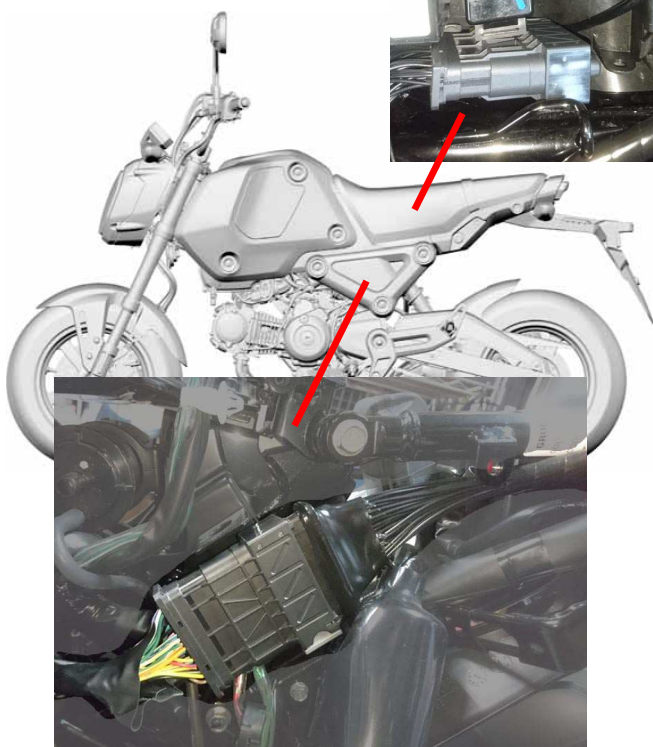
The ENIGMA SemiFull has a length of wiring that mounts under the seat, under the right side cowl. Please install it so that it does not get wet.

Installation example

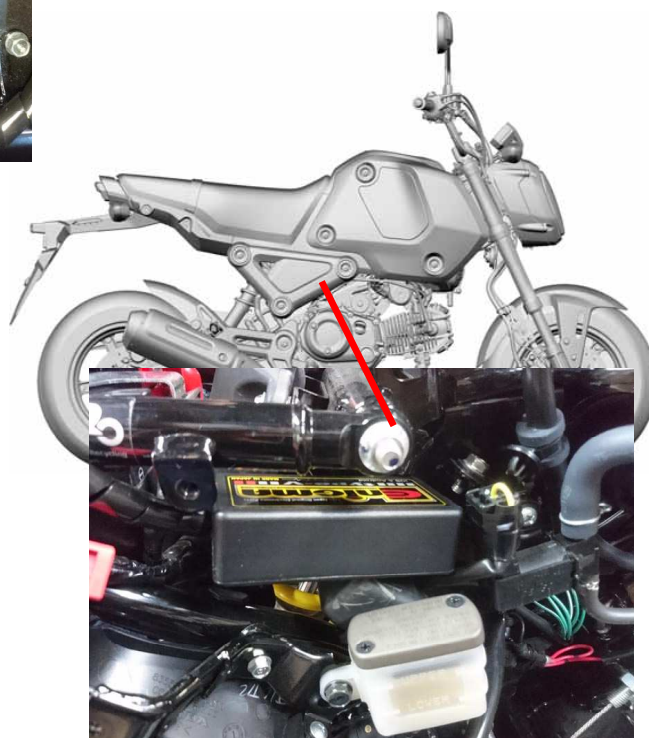


RTF type.

In the space behind the battery under the seat
Example of installing ECU and ENIGMA.



RTF type ECU installation



Example of ENIGMA mounted inside the right side cowl

In the case of the discrete wire type ENIGMA SemiFull, Make an **interrupt connection** from the ENIGMA SemiFull wiring to the wiring on the coupler side.

(AN interrupt connection can made without cutting but by making a branch in the normal connection)

Do not use an electro tap on the interrupt wiring connection. It causes many connection issues that are problematic to the operation of the ENIGMA SemiFull. (Use solder or the like for improved reliability.)

The wires from the ENIGMA SemiFull will be the fundamentally the same, or similar to that of the wires it will connect to from the bike. Please carefully follow the diagram below when making the connection. There are a total of 13 wires.

- The purple cable is a service cable and is not to be connected to the ECU. When you do not want to use this function, please tip of the wire is insulated with tape so as not to short against the metal part.

- The White wire is a pit lane switch service and is not to be connected to the ECU. When you do not want to use this function, please tip of the wire is insulated with tape so as not to short against the metal part.

- The Gray/Red wire is a wire for the MAP changeover switch and is not to be connected to the ECU. When you do not want to use this function, please tip of the wire is insulated with tape so as not to short against the metal part.

- By cutting the No.18Pin (Pink / Blue) wire of ECU (Ignition signal), the bike vehicle body side wiring from the ENIGMA SemiFull connect the Pink / Blue wire. Connect the Pink / White wire the ECU side.

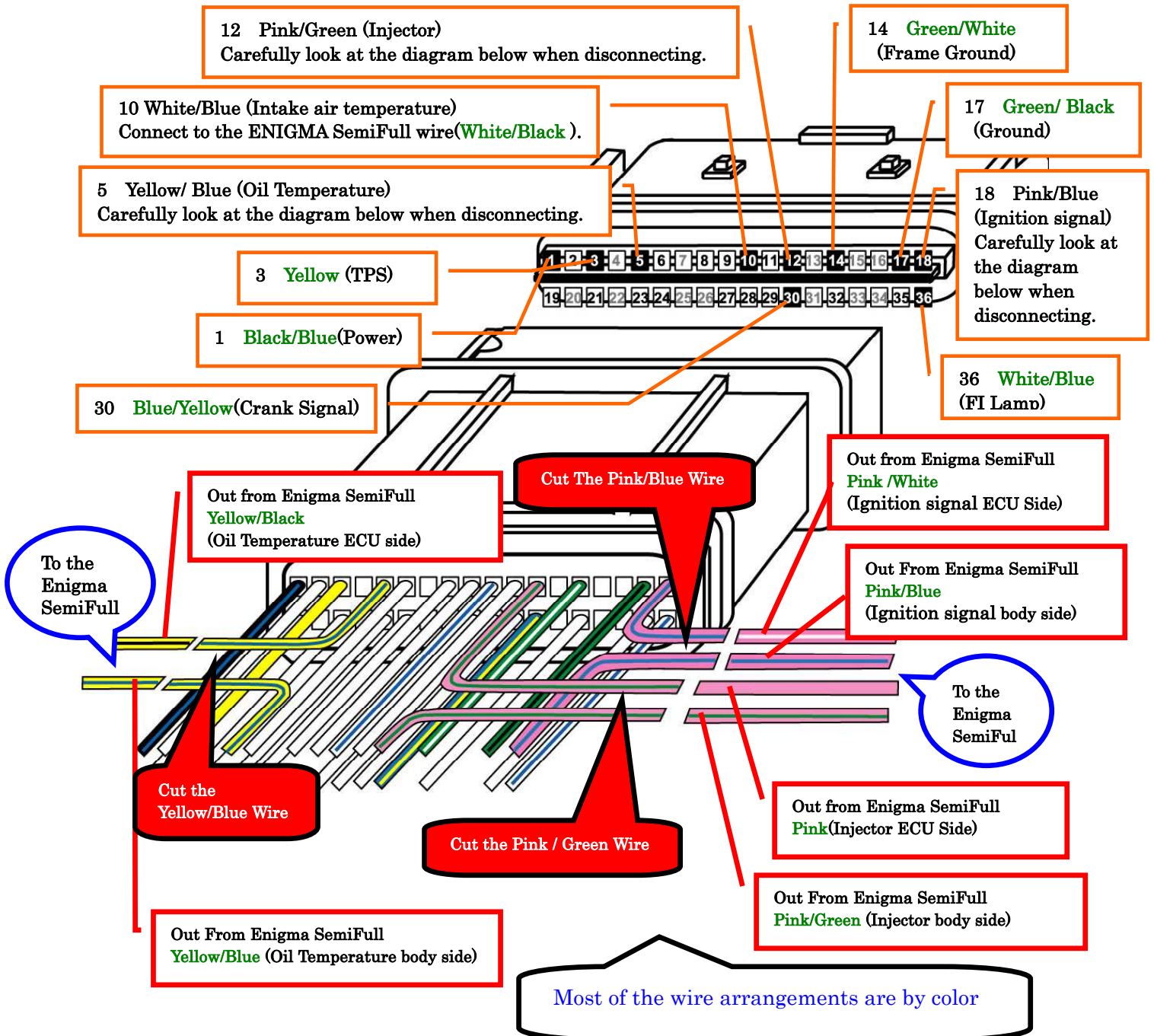
- By cutting the No.12 Pin (Pink / Green) wire of ECU (Injecttor), the bike vehicle body side wiring from the ENIGMA SemiFull connect the Pink / Green wire. Connect the Pink wire the ECU side.Since there is a polarity to the connection, please check the figure below carefully to make sure that the connection is correct.

- **Both the No.17 Pin and the No.35 Pin are Green/ Black wire. Be careful.**

- The No.10 Pin (White / Blue) wire is the Intake air temperature sensor, Connect to the ENIGMA SemiFull wire(White / Black). **The No. 36 Pin (FI lamp) wire is same color(White / Blue),Be careful.**

- By cutting the No.5 Pin (Yellow/ Blue) wire of ECU (Oil Temperature), the bike vehicle body side wiring from the ENIGMA SemiFull connect the Yellow/ Blue wire. Connect the Yellow/Black wire the ECU side. Since there is a polarity to the connection, please check the figure below carefully to make sure that the connection is correct.

In order to prevent the reporting water from entering into the ENIGMA inside from the base of the wiring from the ENIGMA SemiFull , it is recommended that you install in the lower wiring side in the vertical the ENIGMA SemiFull.



ECU terminal connected 10wires 1, 3, 5, 10, 12, 14, 17, 18, 30, 36. Please confirm the picture.

The purple line is the service output line. The ENIGMA SemiFull will output 5V each crank rotation (or Once every two crank revolutions). Most commercially available digital tachometers are supported. Exact values will be displayed if these cables are connected. They are useful to various applications. Do not short-circuit by taping when there is no need.

Please use the Enigma Semifull dedicated app for the iOS/Android version of the app. Download the **GROM (2BJ-JC92)** dedicated Enigma Semifull app from the model selection screen in the app. Other Vehicle dedicated apps cannot be used.

Please use the **GROM (2BJ-JC92)** dedicated Enigma Semifull PCsoftware. Other Vehicle, Other ENIGMA dedicated PCsoftwares,cannot be used.

The Enigma Semifull operating software can be downloaded free from our website.
<http://www.dilts-japan.com>

Installation of the pit lane limiter switch

"White wire" that has come out from ENIGMA Semifull is the wiring for the pit lane limiter switch installation.

Pit lane limiter to the rotation of the constant engine speed to control the speed only when the external switch ON

You control. Do those who want to use this feature by performing the following tasks.

In general, to buy a handle mounting switch, which is commercially available, it should be placed in easy-to-use position.

(If you are installing to handle and place easy to operate location does not interfere with operation)

Switch is common thing that cuts in the "OFF" position to connect with the "ON" position.

Switch is not suitable to be connected only when you press. be careful.

Connect the White line the installation of the switch is out of the ENIGMA Semifull when finished.

Connect the White line to one of the terminals of the switch. The other is connected to ensure that "body earth".

The most reliable of is to connect to the negative battery. Circuit will be burned down and unavailable when connecting to the positive wrong. Never done.

This completes the installation of pit lane limiter switch with more work

When you do not want to use the pit lane limiter function, please tip of the wire is insulated with tape so as not to short against the metal part.

Installation of the MAP changeover switch

"Gray/Red wire" that has come out from ENIGMA Semifull is the wiring for the MAP changeover switch installation. You can instantly switch between a two maps with the MAP changeover switch.

Do those who want to use this feature by performing the following tasks.

In general, to buy a handle mounting switch, which is commercially available, it should be placed in easy-to-use position. (If you are installing to handle and place easy to operate location does not interfere with operation.)

Switch is common thing that cuts in the "OFF" position to connect with the "ON" position.

Switch is not suitable to be connected only when you press. be careful.

Connect the Gray/Red line from the ENIGMA Semifull when finished the installation of the switch.

Connect the Gray/Red line to one of the terminals of the switch. The other is connected to ensure that "body earth". **The most reliable of is to connect to the negative battery. Circuit will be burned down and unavailable when connecting to the positive wrong. Never done.**

This completes the wiring for the MAP changeover switch with more work.

When you do not want to use the wiring for the MAP changeover function, please tip of the wire is insulated with tape so as not to short against the metal part.

When switching maps, Be sure to transfer the data to both maps before starting to avoid engine trouble.